

# FLYER-730A SERIES



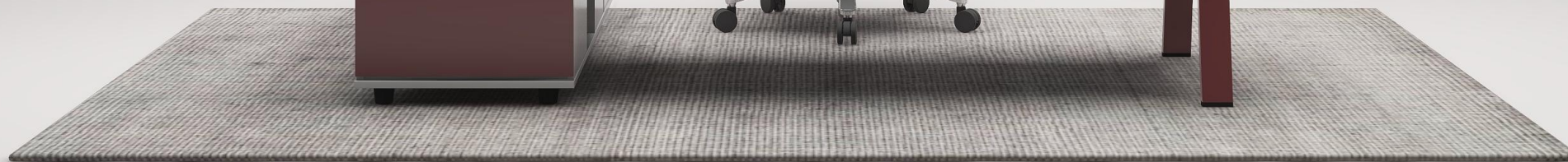
- 730A SERIES EXECUTIVE DESK
- 730A SERIES WORKSTATION

# PRODUCT



**730A  
SERIES**

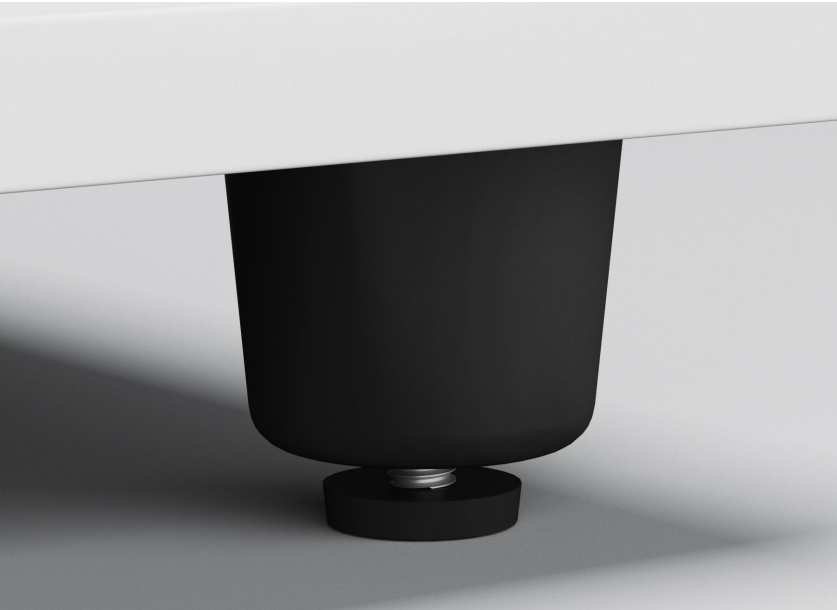
**730A SERIES  
EXECUTIVE DESK**



**730A SERIES  
EXECUTIVE DESK**



# THE QUALITY IS DIFFERENT BECAUSE OF THESE!



**Adjustable feet**



**Silent damping drawer slides  
Invisible handles**



**Cable tray**

## EXECUTIVE DESK



# 730A SERIES DESK



# 730A SERIES WORKSTATION



# 730A SERIES WORKSTATION



# 730A SERIES WORKSTATION



# 730A SERIES WORKSTATION



**Adding a screen on the table can be turned into a workstation.**

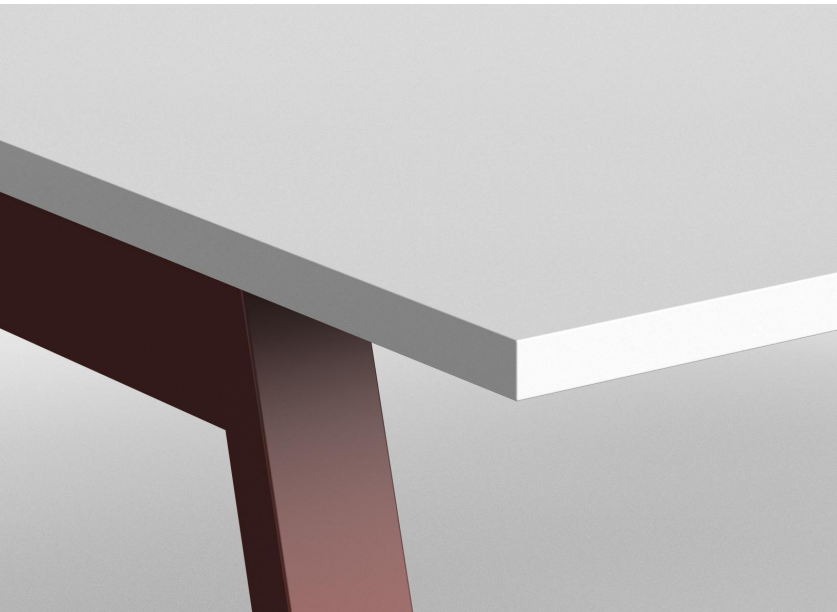


**Remove the screen on the table and turn it into a conference table.**

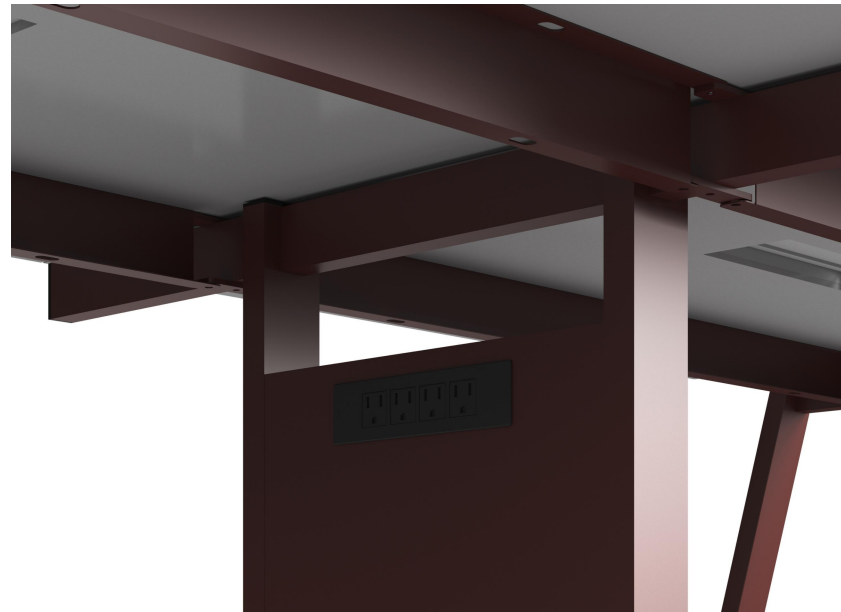
**730A SERIES  
MEETING TABLE**



# THE QUALITY IS DIFFERENT BECAUSE OF THESE!



**25mm desktop, PUR edge banding**



**Middle leg(cable riser)**



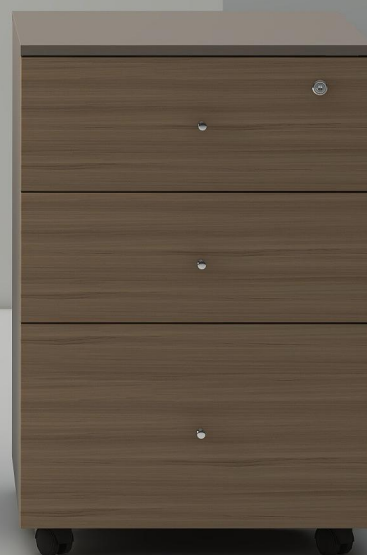
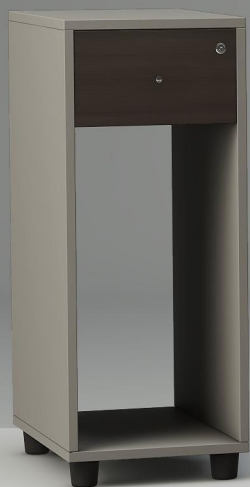
**Steel frame**

# 730A SERIES FILE CABINET



Item Name	N-C3 0.8m File cabinet	N-C3 1.2m File cabinet	N-C3 1.6m File cabinet	N-C3 2.0m File cabinet	N-C3 2.48m File cabinet
Item No.	FS03-08	FS03-12	FS03-16	FS03-20	FS03-24
Specification (L*W*H, mm)	800*400*1240	1200*400*1240	1600*400*1240	2000*400*1240	2400*400*1240

**25 SERIES**  
**MOBILE PEDESTAL**



# AVAILABLE IN VARIOUS MOBILE PEDESTALS



Item Name	Mobile pedestal	Mobile pedestal	Mobile pedestal	Mobile pedestal	Computer host stand
Item No.	GC-H01	DA-B040406-19A	DA-D040406-19A	DA-J030507-19A	DA-F050210-19A
Specification (L*W*H, mm)	400*400*600	400*400*600	400*400*600	265*445*680	450*180*55

# AVAILABLE IN VARIOUS FITTINGS



Item Name	suspended drawer
Item No.	AS-04
Specification (L*W*H, mm)	450*70*320



Item Name	suspended cabinet with door
Item No.	AS-03
Specification (L*W*H, mm)	220*400*500



Item Name	suspended cabinet
Item No.	AS-02
Specification (L*W*H, mm)	220*400*500



Item Name	suspended cabinet for copmputer host
Item No.	AS-01
Specification (L*W*H, mm)	180*300*500